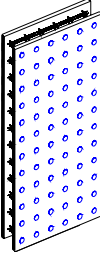
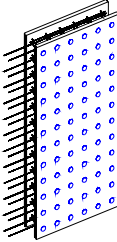
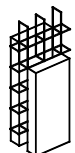


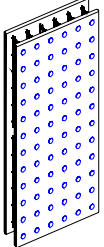
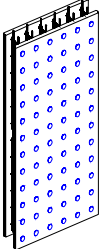
1.1. GENERAL SPECIFICATIONS

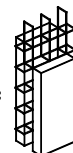
| SKETCH | DIMENSION | CONCRETE CORE THICKNESS | | | | | |
|---|---|-------------------------|----------------|----------------|----------------|----------------|----------------|
| | | 100 [4"] | 150 [6"] | 200 [8"] | 250 [10"] | 300 [12"] | 350 [14"] |
| Basic Products | | | | | | | |
| H-Plain Panel (Horizontal spacers) | | | | | | | |
|  | Length | 1200 [48"] | 1200 [48"] | 1200 [48"] | 1200 [48"] | 1200 [48"] | 1200 [48"] |
| | Height | 2400 [96"] | 2400 [96"] | 2400 [96"] | 2400 [96"] | 2400 [96"] | 2400 [96"] |
| | Exterior Surface Area: m ² / ft ² | 2.97 [32] | 2.97 [32] | 2.97 [32] | 2.97 [32] | 2.97 [32] | 2.97 [32] |
| | EPS thickness | 50 [2"] | 50 [2"] | 50 [2"] | 50 [2"] | 50 [2"] | 50 [2"] |
| | Weight: kg/ lbs | 15.4 [33.9] | 16.0 [35.2] | 16.6 [36.5] | 17.2 [37.8] | 18.3 [40.3] | 18.4 [40.5] |
| | R, value [h·ft ² ·°F/BTU] | 20.3 | 20.6 | 20.8 | 21.0 | 21.2 | 21.5 |
| HR-Plain Panel (Horizontal spacers & Horizontal Reinforcement) | | | | | | | |
|  | Length | 1200 [48"] | 1200 [48"] | 1200 [48"] | 1200 [48"] | 1200 [48"] | 1200 [48"] |
| | Height | 2400 [96"] | 2400 [96"] | 2400 [96"] | 2400 [96"] | 2400 [96"] | 2400 [96"] |
| | Exterior Surface Area: m ² / ft ² | 2.97 [32] | 2.97 [32] | 2.97 [32] | 2.97 [32] | 2.97 [32] | 2.97 [32] |
| | EPS thickness | 50 [2"] | 50 [2"] | 50 [2"] | 50 [2"] | 50 [2"] | 50 [2"] |
| | Weight: kg/ lbs | 18.4 [40.4] | 24.8 [54.5] | 26.2 [57.6] | 34.6 [76.1] | 35.2 [77.4] | 35.8 [78.6] |
| | R, value [h·ft ² ·°F/BTU] | 20.3 | 20.6 | 20.8 | 21.0 | 21.2 | 21.5 |



GENERAL SPECIFICATIONS

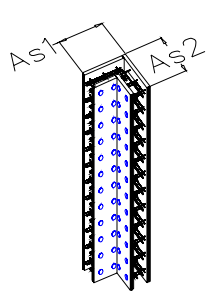
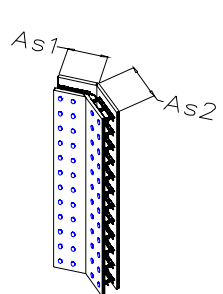
Continued

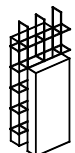
| SKETCH | DIMENSION | CONCRETE CORE THICKNESS | | | | | |
|---|---|-------------------------|----------------|----------------|----------------|----------------|----------------|
| | | 100 [4"] | 150 [6"] | 200 [8"] | 250 [10"] | 300 [12"] | 350 [14"] |
| V- Plain Panel (Vertical spacers) | | | | | | | |
|  | Length | 1200 [48"] | 1200 [48"] | 1200 [48"] | 1200 [48"] | 1200 [48"] | 1200 [48"] |
| | Height | 2400 [96"] | 2400 [96"] | 2400 [96"] | 2400 [96"] | 2400 [96"] | 2400 [96"] |
| | Exterior Surface Area m ² / ft ² | 2.97 [32] | 2.97 [32] | 2.97 [32] | 2.97 [32] | 2.97 [32] | 2.97 [32] |
| | EPS thickness | 50 [2"] | 50 [2"] | 50 [2"] | 50 [2"] | 50 [2"] | 50 [2"] |
| | Weight: kg/ lbs | 15.4 [33.9] | 16.0 [35.2] | 16.6 [36.5] | 17.2 [37.8] | 18.3 [40.3] | 18.5 [40.7] |
| | R, value [h·ft ² ·°F/BTU] | 20.3 | 20.6 | 20.8 | 21.0 | 21.2 | 21.5 |
| VR- Plain Panel (Vertical spacers & Vertical Reinforcement) | | | | | | | |
|  | Length | 1200 [48"] | 1200 [48"] | 1200 [48"] | 1200 [48"] | 1200 [48"] | 1200 [48"] |
| | Height | 2400 [96"] | 2400 [96"] | 2400 [96"] | 2400 [96"] | 2400 [96"] | 2400 [96"] |
| | Exterior Surface Area: m ² / ft ² | 2.97 [32] | 2.97 [32] | 2.97 [32] | 2.97 [32] | 2.97 [32] | 2.97 [32] |
| | EPS thickness | 50 [2"] | 50 [2"] | 50 [2"] | 50 [2"] | 50 [2"] | 50 [2"] |
| | Weight: kg/ lbs | 18.4 [40.4] | 24.8 [54.5] | 26.2 [57.6] | 34.6 [76.1] | 35.2 [77.4] | 35.8 [78.6] |
| | R, value [h·ft ² ·°F/BTU] | 20.3 | 20.6 | 20.8 | 21.0 | 21.2 | 21.5 |



GENERAL SPECIFICATIONS

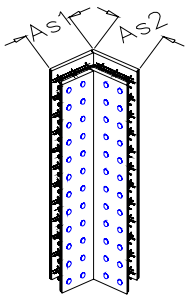
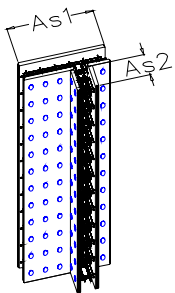
Continued

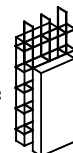
| SKETCH | DIMENSION | CONCRETE CORE THICKNESS | | | | | | |
|---|---|-------------------------|----------------|----------------|----------------|----------------|----------------|----------------|
| | | 100 [4"] | 150 [6"] | 200 [8"] | 250 [10"] | 300 [12"] | 350 [14"] | |
| 90° Corner Panel (Horizontal spacers & Horizontal Reinforcement) | | | | | | | | |
|  | Length | 650 [26"] | 650 [26"] | 650 [26"] | 780 [31"] | 780 [31"] | 850 [33.5"] | |
| | Width | 595 [23"] | 595 [23"] | 595 [23"] | 595 [23"] | 595 [23"] | 595 [23"] | |
| | Height | 2400 [96"] | 2400 [96"] | 2400 [96"] | 2400 [96"] | 2400 [96"] | 2400 [96"] | |
| | Exterior Surface Area m ² / ft ² (As1+As2) | 2.99 [32.7] | 2.99 [32.7] | 2.99 [32.7] | 3.30 [36] | 3.30 [36] | 3.45 [37.7] | |
| | EPS thickness | 50 [2"] | 50 [2"] | 50 [2"] | 50 [2"] | 50 [2"] | 50 [2"] | |
| | Weight: kg/ lbs | 21.2 [46.6] | 21.6 [47.5] | 22.0 [48.4] | 22.4 [49.3] | 23.1 [50.8] | 23.7 [52.1] | |
| | R, value [h·ft ² ·°F/BTU] | 20.3 | 20.6 | 20.8 | 21.0 | 21.2 | 21.5 | |
| | 45° Corner Panel (Horizontal spacers & Horizontal Reinforcement) | | | | | | | |
| |  | Length | 660 [26"] | 660 [26"] | 680 [27"] | 705 [28"] | 620 [24.4"] | 620 [24.4"] |
| Width | | 535 [21"] | 535 [21"] | 585 [23"] | 585 [23"] | 585 [23"] | 585 [23"] | |
| Height | | 2400 [96"] | 2400 [96"] | 2400 [96"] | 2400 [96"] | 2400 [96"] | 2400 [96"] | |
| Exterior Surface Area m ² / ft ² (As1+As2) | | 2.87 [31.3] | 2.87 [31.3] | 3.04 [32.7] | 3.10 [34] | 2.89 [31.6] | 2.89 [31.6] | |
| EPS thickness | | 50 [2"] | 50 [2"] | 50 [2"] | 50 [2"] | 50 [2"] | 50 [2"] | |
| Weight: kg/ lbs | | 21.2 [46.6] | 21.6 [47.5] | 22.0 [48.4] | 22.4 [49.3] | 23.1 [50.8] | 23.7 [52.1] | |
| R, value [h·ft ² ·°F/BTU] | | 20.3 | 20.6 | 20.8 | 21.0 | 21.2 | 21.5 | |



GENERAL SPECIFICATIONS

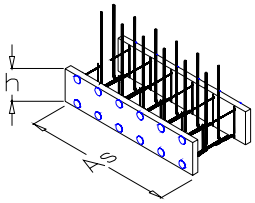
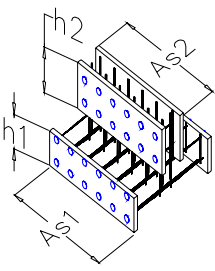
Continued

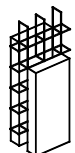
| SKETCH | DIMENSION | CONCRETE CORE THICKNESS | | | | | |
|---|---|-------------------------|----------------|----------------|----------------|-----------------|----------------|
| | | 100 [4"] | 150 [6"] | 200 [8"] | 250 [10"] | 300 [12"] | 350 [14"] |
| 30° Corner Panel (Horizontal spacers & Horizontal Reinforcement) | | | | | | | |
|  | Length | 650 [25.6"] | 650 [25.6"] | 650 [25.6"] | 780 [30.7"] | 780 [30.7"] | 850 [33.5"] |
| | Width | 595 [23.4"] | 595 [23.4"] | 595 [23.4"] | 595 [23.4"] | 595 [23.4"] | 595 [23.4"] |
| | Height | 2400 [96"] | 2400 [96"] | 2400 [96"] | 2400 [96"] | 2400 [96"] | 2400 [96"] |
| | Exterior Surface Area m ² / ft ² (As1+As2) | 2.99 [31.3] | 2.99 [31.3] | 2.99 [32.7] | 3.30 [34] | 3.30 [31.6] | 3.45 [31.6] |
| | EPS thickness | 50 [2"] | 50 [2"] | 50 [2"] | 50 [2"] | 50 [2"] | 50 [2"] |
| | Weight: kg/ lbs | 21.2 [46.6] | 21.6 [47.5] | 22.0 [48.4] | 22.4 [49.3] | 23.1 [[50.8] | 23.7 [52.1] |
| | R, value [h·ft ² ·°F/BTU] | 20.3 | 20.6 | 20.8 | 21.0 | 21.2 | 21.5 |
| | T- Panel (Horizontal spacers & Horizontal Reinforcement) | | | | | | |
|  | Length | 1200 [48"] | 1200 [48"] | 1200 [48"] | 1200 [48"] | 1200 [48"] | 1200 [48"] |
| | Width | 348 [14"] | 348 [14"] | 346 [14"] | 346 [13.6"] | 346 [13.6"] | 346 [13.6"] |
| | Height | 2400 [96"] | 2400 [96"] | 2400 [96"] | 2400 [96"] | 2400 [96"] | 2400 [96"] |
| | Exterior Surface Area m ² / ft ² (As1+As2) | 3.81 [41.3] | 3.81 [41.3] | 3.81 [41.3] | 3.81 [41.3] | 3.81 [41.3] | 3.81 [41.3] |
| | EPS thickness | 50 [2"] | 50 [2"] | 50 [2"] | 50 [2"] | 50 [2"] | 50 [2"] |
| | Weight: kg/ lbs | 33.2 [73.0] | 33.7 [74.1] | 34.3 [75.5] | 35.2 [77.4] | 36.1 [79.4] | 36.6 [80.5] |
| | R, value [h·ft ² ·°F/BTU] | 20.3 | 20.6 | 20.8 | 21.0 | 21.2 | 21.5 |



GENERAL SPECIFICATIONS

Continued

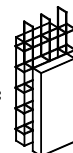
| SKETCH | DIMENSION | CONCRETE CORE THICKNESS | | | | | | |
|---|---|-------------------------|----------------|----------------|----------------|----------------|----------------|---------------|
| | | 100 [4"] | 150 [6"] | 200 [8"] | 250 [10"] | 300 [12"] | 350 [14"] | |
| HVF- Foundation Panel (Vertical spacers & Dowels) | | | | | | | | |
|  | Length | 1200 [48"] | 1200 [48"] | 1200 [48"] | 1200 [48"] | 1200 [48"] | 1200 [48"] | |
| | Footing thickness | 460 [18"] | 460 [18"] | 460 [18"] | 510 [20"] | 560 [22"] | 610 [24"] | |
| | Height | 300 [12"] | 300 [12"] | 300 [12"] | 300 [12"] | 300 [12"] | 300 [12"] | |
| | Exterior (As) Surface Area m ² / ft ² | 0.36 [9.3"] | 0.36 [9.3"] | 0.36 [9.3"] | 0.36 [9.3"] | 0.36 [9.3"] | 0.36 [9.3"] | |
| | Weight: kg/ lbs | 10.1 22.2 | 11.0 24.2 | 17.6 38.7 | 18.5 40.7 | 19.4 42.7 | 20.3 44.7 | |
| | EPS thickness | 50 [2"] | 50 [2"] | 50 [2"] | 50 [2"] | 50 [2"] | 50 [2"] | |
| | HRF- Foundation Panel (Vertical spacers & Dowels) | | | | | | | |
| |  | Length | 1200 [48"] | 1200 [48"] | 1200 [48"] | 1200 [48"] | 1200 [48"] | 1200 [48"] |
| Footing Thickness | | 460 [18"] | 460 [18"] | 510 [20"] | 560 [22"] | 610 [24"] | 610 [24"] | |
| Height (h1) | | 300 [12"] | 300 [12"] | 300 [12"] | 300 [12"] | 300 [12"] | 300 [12"] | |
| (h2) | | 400 [16"] | 400 [16"] | 400 [16"] | 400 [16"] | 400 [16"] | 400 [16"] | |
| Exterior Surf. Area m ² / ft ² (As1+As2) | | 0.84 [9.3"] | 0.84 [9.3"] | 0.84 [9.3"] | 0.84 [9.3"] | 0.84 [9.3"] | 0.84 [9.3"] | |
| Weight: kg/ lbs | | 11.6 25.5 | 12.5 27.5 | 19.0 41.8 | 19.9 43.8 | 20.8 45.8 | 21.7 47.7 | |
| EPS thickness | | 50 [2"] | 50 [2"] | 50 [2"] | 50 [2"] | 50 [2"] | 50 [2"] | |



GENERAL SPECIFICATIONS

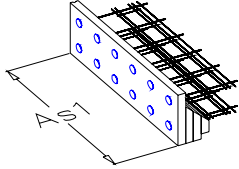
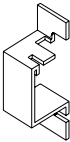
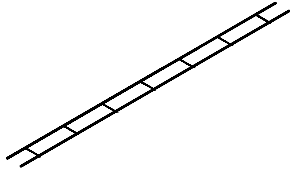
Continued

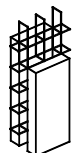
| SKETCH | DIMENSION | CONCRETE CORE THICKNESS | | | | | |
|---|--|-------------------------|-------------|---------------|---------------|---------------|---------------|
| | | 100 [4"] | 150 [6"] | 200 [8"] | 250 [10"] | 300 [12"] | 350 [14"] |
| Foundation Panel (Vertical spacers & Reinforcement; can be used in the buildings without basement) | | | | | | | |
| | Length | | | 1200 [48"] | 1200 [48"] | 1200 [48"] | 1200 [48"] |
| | Footing Thickness | | | 460 [18"] | 510 [20"] | 560 [22"] | 610 [24"] |
| | Height (h1) | | | 300 [12"] | 300 [12"] | 300 [12"] | 300 [12"] |
| | (h2) | | | 1200 [48"] | 1200 [48"] | 1200 [48"] | 1200 [48"] |
| | Exterior Surf. Area m ² / ft ² (As1+As2) | | | 1.88 [20"] | 1.8 [20"] | 1.8 [20"] | 1.8 [20"] |
| | Weight: kg/ lbs | | | 38 84 | 39.5 87 | 41.8 92 | 43.6 96 |
| | EPS thickness | | | 50 [2"] | 50 [2"] | 50 [2"] | 50 [2"] |



GENERAL SPECIFICATIONS

Continued

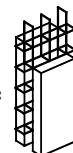
| SKETCH | DIMENSION | CONCRETE CORE THICKNESS | | | | | |
|---|--|-------------------------|----------------|----------------|----------------|----------------|----------------|
| | | 100 [4"] | 150 [6"] | 200 [8"] | 250 [10"] | 300 [12"] | 350 [14"] |
| Assembly elements and accessories | | | | | | | |
| Brick-ledge Panel | | | | | | | |
|  | Length | 1200 [48"] | 1200 [48"] | 1200 [48"] | 1200 [48"] | 1200 [48"] | 1200 [48"] |
| | Width | 200 [8"] | 200 [8"] | 200 [8"] | 200 [8"] | 200 [8"] | 200 [8"] |
| | Height | 450 [16"] | 450 [16"] | 450 [16"] | 450 [16"] | 450 [16"] | 450 [16"] |
| | Exterior Surface Area m ² / ft ² (As1) | 0.48 [5.3"] | 0.48 [5.3"] | 0.48 [5.3"] | 0.48 [5.3"] | 0.48 [5.3"] | 0.48 [5.3"] |
| | EPS thickness | 50 [2"] | 50 [2"] | 50 [2"] | 50 [2"] | 50 [2"] | 50 [2"] |
| | Weight: kg/ lbs | 7.3 16.1 | 7.45 16.4 | 7.6 16.7 | 7.75 17.1 | 7.9 17.4 | 8.1 17.8 |
| | R, value [h·ft ² ·°F/BTU] | 20.3 | 20.6 | 20.8 | 21.0 | 21.2 | 21.5 |
| | Brick-ledge element | | | | | | |
|  | Weight: kg/ lbs | 0.85 1.87 | 0.85 1.87 | 0.85 1.87 | 0.85 1.87 | 0.85 1.87 | 0.85 1.87 |
| Horizontal Reinforcing Mesh | | | | | | | |
|  | Length | 2800 [110] | 2850 [112] | 2800 [110] | 2850 [112] | 2850 [112] | 3050 [120] |
| | Width | 90 [3.5] | 90 [3.5] | 120 [4.7] | 170 [6.7] | 220 [8.7] | 270 [10.7] |
| | Weight: kg/ lbs | 1.35 [2.7] | 1.35 [2.7] | 2.32 [5.1] | 3.3 [7.3] | 4.7 [10] | 6.7 [14] |
| | Deformed Wire or Rebar | 1xD12 | 1x10M | 2xD12 | 2x10M | 2x10M | 2x15M |
| | mm/in | 1xØ0.39 | 1xØ0.44 | 2xØ0.39 | 2xØ0.444 | 2xØ0.444 | 2xØ0.626 |



GENERAL SPECIFICATIONS

Continued

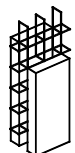
| SKETCH | DIMENSION | CONCRETE CORE THICKNESS | | | | | |
|---|--------------------|-------------------------|----------------|----------------|----------------|----------------|----------------|
| | | 100 [4"] | 150 [6"] | 200 [8"] | 250 [10"] | 300 [12"] | 350 [14"] |
| Connecting Mesh (provides the connection between panels) | | | | | | | |
| | Weight: kg/ lbs | 0.09 0.20 | 0.09 0.20 | 0.09 0.20 | 0.09 0.20 | 0.09 0.20 | 0.09 0.20 |
| U-guide (provides the accurate alignment of the panels) | | | | | | | |
| | Weight: kg/ lbs | 1.05 [2.30] | 1.05 [2.30] | 1.05 [2.30] | 1.05 [2.30] | 1.05 [2.30] | 1.05 [2.30] |
| Turn-buckle Brace | | | | | | | |
| | Weight: kg/ lbs | 8.92 19.6 | 8.92 19.6 | 8.92 19.6 | 8.92 19.6 | 8.92 19.6 | 8.92 19.6 |



GENERAL SPECIFICATIONS

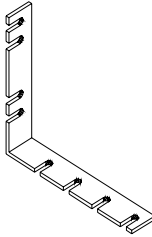
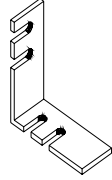
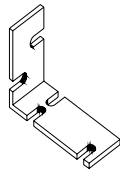
Continued

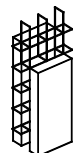
| SKETCH | DIMENSION | CONCRETE CORE THICKNESS | | | | | |
|---|--------------------|-------------------------|---------------|---------------|---------------|---------------|---------------|
| | | 100 [4"] | 150 [6"] | 200 [8"] | 250 [10"] | 300 [12"] | 350 [14"] |
| Post (provides the vertical alignment of the panels) | | | | | | | |
| | Weight: kg/ lbs | 10.5 23.1 | 10.5 23.1 | 10.5 23.1 | 10.5 23.1 | 10.5 23.1 | 10.5 23.1 |
| Pad Flange | | | | | | | |
| | Weight: kg/ lbs | 1.3 2.9 | 1.3 2.9 | 1.3 2.9 | 1.3 2.9 | 1.3 2.9 | 1.3 2.9 |
| Scaffolding | | | | | | | |
| | Weight: kg/ lbs | 7.38 16.24 | 7.38 16.24 | 7.38 16.24 | 7.38 16.24 | 7.38 16.24 | 7.38 16.24 |



GENERAL SPECIFICATIONS

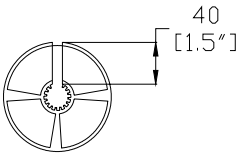
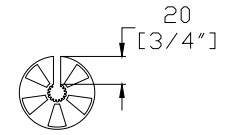
Continued

| SKETCH | DIMENSION | CONCRETE CORE THICKNESS | | | | | |
|---|--------------------|-------------------------|--------------|--------------|--------------|--------------|--------------|
| | | 100 [4"] | 150 [6"] | 200 [8"] | 250 [10"] | 300 [12"] | 350 [14"] |
| External Connecting element-1 for 90° Corner | | | | | | | |
|  | Weight: kg/ lbs | 0.51 1.12 | 0.51 1.12 | 0.51 1.12 | 0.51 1.12 | 0.51 1.12 | 0.51 1.12 |
| Internal Connecting element-2 for 90° Corner | | | | | | | |
|  | Weight: kg/ lbs | 0.21 0.46 | 0.21 0.46 | 0.21 0.46 | | | |
| Internal Connecting element-3 for 90° Corner | | | | | | | |
|  | Weight: kg/ lbs | | | | 0.27 0.60 | 0.27 0.60 | 0.27 0.60 |



GENERAL SPECIFICATIONS

Continued

| SKETCH | DIMENSION | CONCRETE CORE THICKNESS | | | | | |
|---|--------------------|-------------------------|----------------|----------------|----------------|----------------|----------------|
| | | 100 [4"] | 150 [6"] | 200 [8"] | 250 [10"] | 300 [12"] | 350 [14"] |
| Plastic Spacer -1 | | | | | | | |
|  | Weight: kg/ lbs | 0.011 0.024 | 0.011 0.024 | 0.011 0.024 | 0.011 0.024 | 0.011 0.024 | 0.011 0.024 |
| Plastic Spacer -2 | | | | | | | |
|  | Weight: kg/ lbs | 0.009 0.020 | 0.009 0.020 | 0.009 0.020 | 0.009 0.020 | 0.009 0.020 | 0.009 0.020 |

