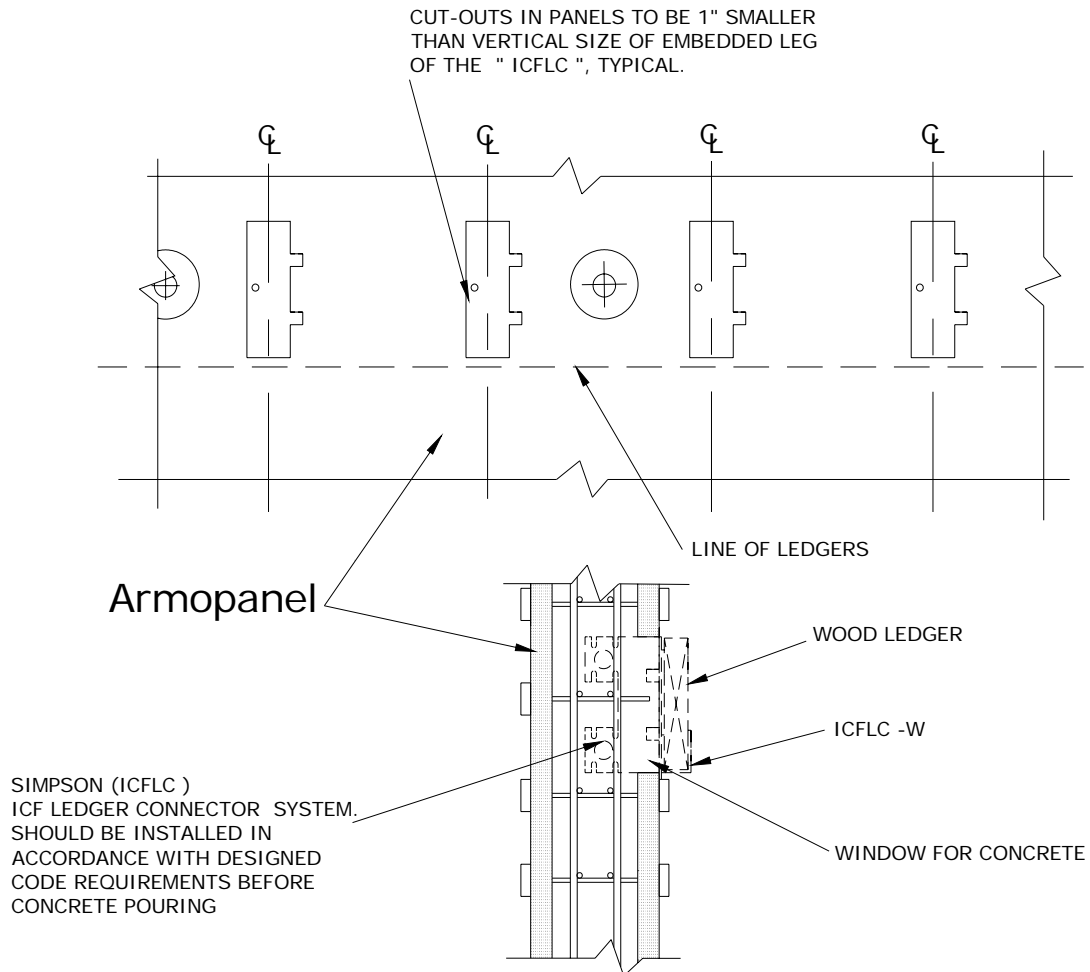


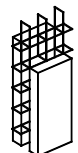
## 7. Seventh phase: Installation of the floor supporting elements

If the next storey of the building is also constructed using **Armopanel™** it is necessary to install a ledger to the floor prior to pouring the concrete. Mark the bottom level of the floor slab. Above this mark, cut rectangular pieces in the polystyrene sheet between floor beams and insert embedded anchors for slab support into these openings

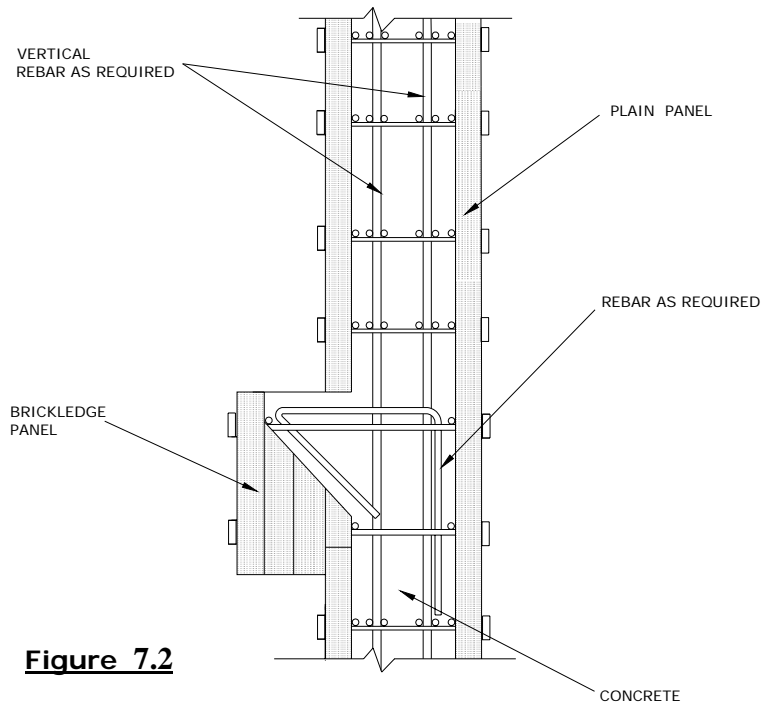


**Figure 7.1**

**Useful tip:** Connect the supporting embedded details to the **Armopanel™** plastic cap with plywood piece to keep them in the designed position.



## 7.1. Concrete ledge



**Figure 7.2**

### To build the ledge, you should adhere to the following steps on the construction site:

In the plain and /or corner panel, cut out a section which corresponds to the height of the brickledge panel. Insert the standard brick-ledge panel into the opening. Attach the brick-ledge panel to the plain and /or corner panel using connecting ties and secure these ties by means of plastic caps. This should be done prior to the installation of horizontal and vertical reinforcement.

- 1) .Mark on the surface of the polystyrene sheet the bottom line of the proposed brick ledge.
- 2) Cut the polystyrene out for the full length and height of the proposed brick ledge and create an opening for future insertion of the brick-ledge panel (do not cut more than two rows of metal spacers).
- 3) Slightly unscrew plastic caps on the opposite side of the panel
- 4) Remove the metal spacers from the panel.
- 5) Fix bent re-bars to the metal spacers of the brick-ledge panels.
- 6) Insert the brick-ledge panels in the opening by protruding its metal threaded spacers into the openings of the plain panel.
- 7) Connect brick-ledge to the plain panel by means of plastic caps attached to the threaded metal spacers of brick ledge panel.

\* All above-mentioned steps must be done prior to the installation of the vertical and horizontal reinforcement.

