

6. Sixth phase: Installation of lintels

After installation of the panels adjacent to the door and window opening, as well as vertical and horizontal reinforcement, the window and door bucks are placed.

Prior to the placement of bucks, the sill panel is installed and joined to the next panels by means of connecting elements. Bucks are checked for compliance with the design and are fixed with turnbuckles.

Installation of lintels should be done in the following manner:

1. From the panel adjacent to the door/window opening, cut a piece 50mm wide and to the full height of the lintel. This cut should be performed from the bottom of the lintel to its full height and serves as support for lintel panel.
2. Horizontal reinforcement of the lintel should be extended into adjacent panels on both sides of the lintel.
3. Install the lintel panel in the designed position and attach it to adjacent panels using connecting meshes.
4. Vertical reinforcement is placed in the designed position and should be connected to the horizontal reinforcement.

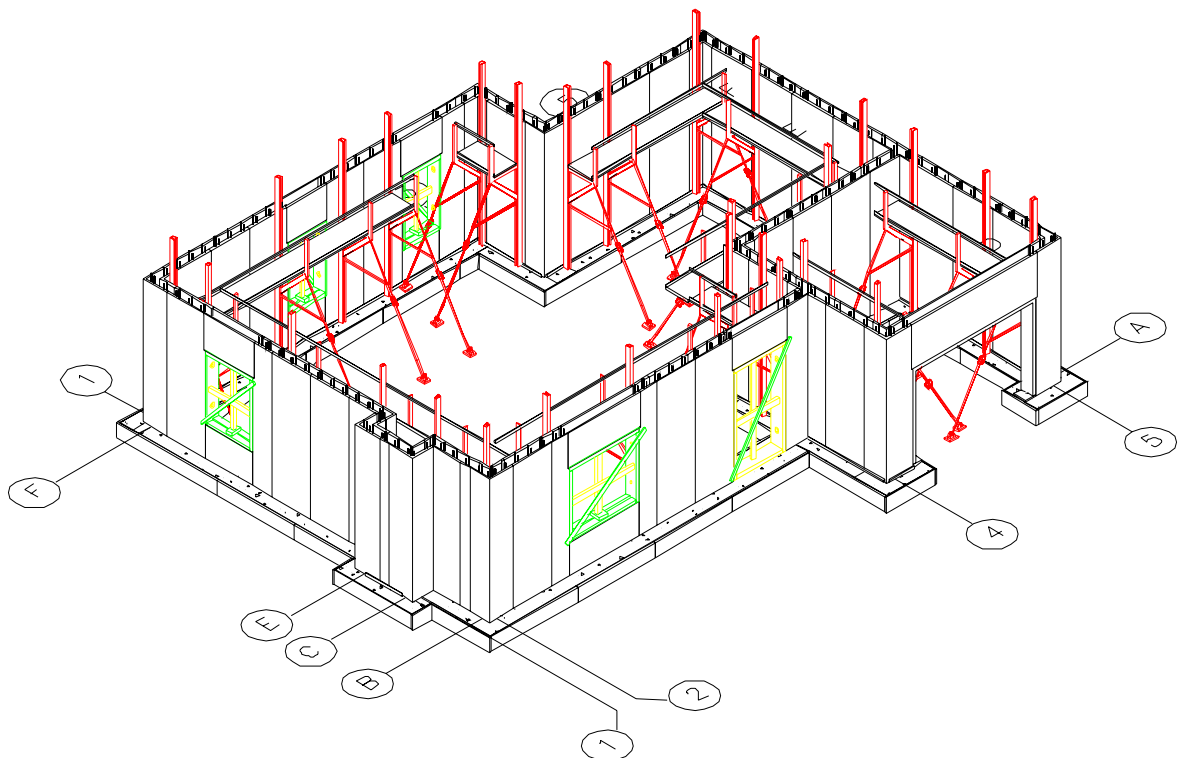
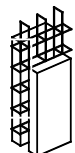


Figure 6.1 Installation diagram for the window sill panels installation, window and door blocks and lintels above the openings



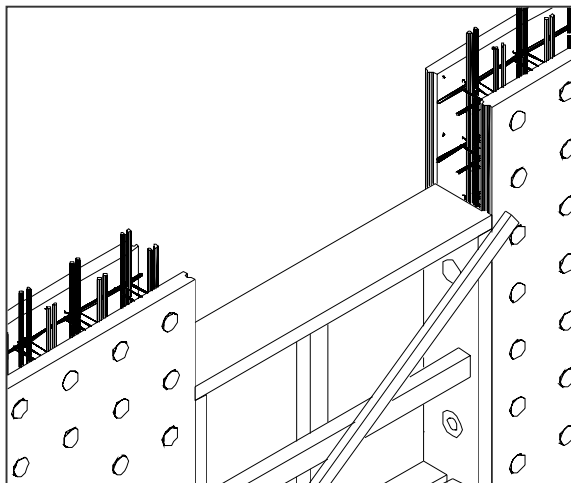


Figure 6.2 Detail of the window block installation

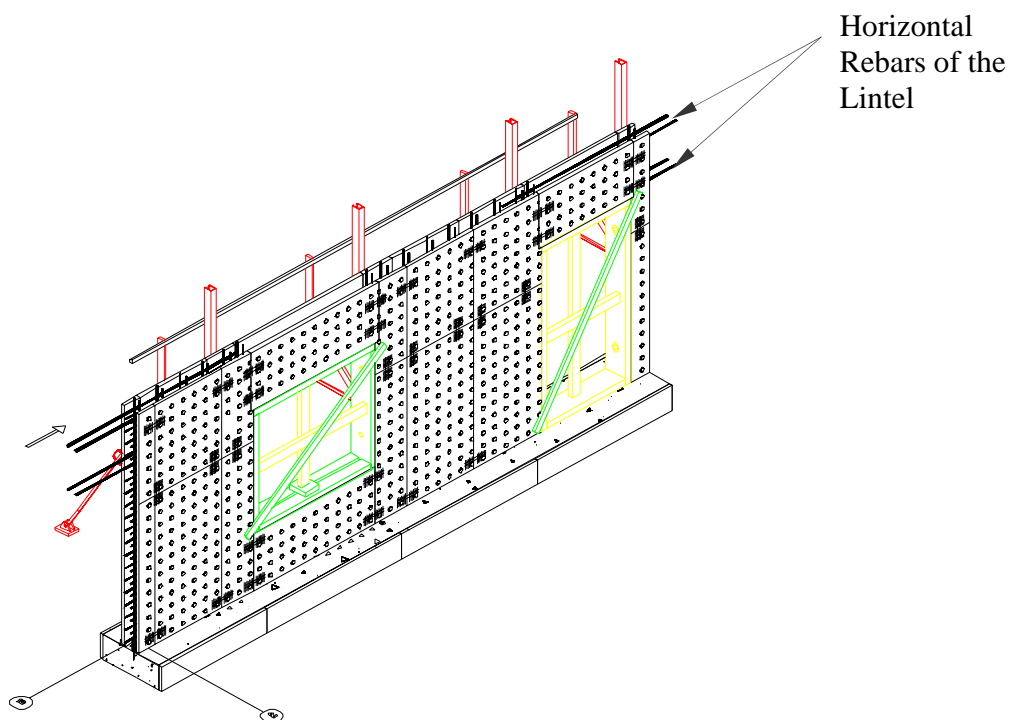


Figure 6.3 Detail of horizontal reinforcement installation in the lintels

