

4. Fourth Phase: Installation of reinforcement

After installation of the plain panel and Alignment System, the vertical reinforcement is to be inserted.

The metal spacers between the panels create a mesh into which vertical reinforcement can be easily inserted @ 200mm (8"), 400mm (16") and 600mm(24") along the horizontal direction.

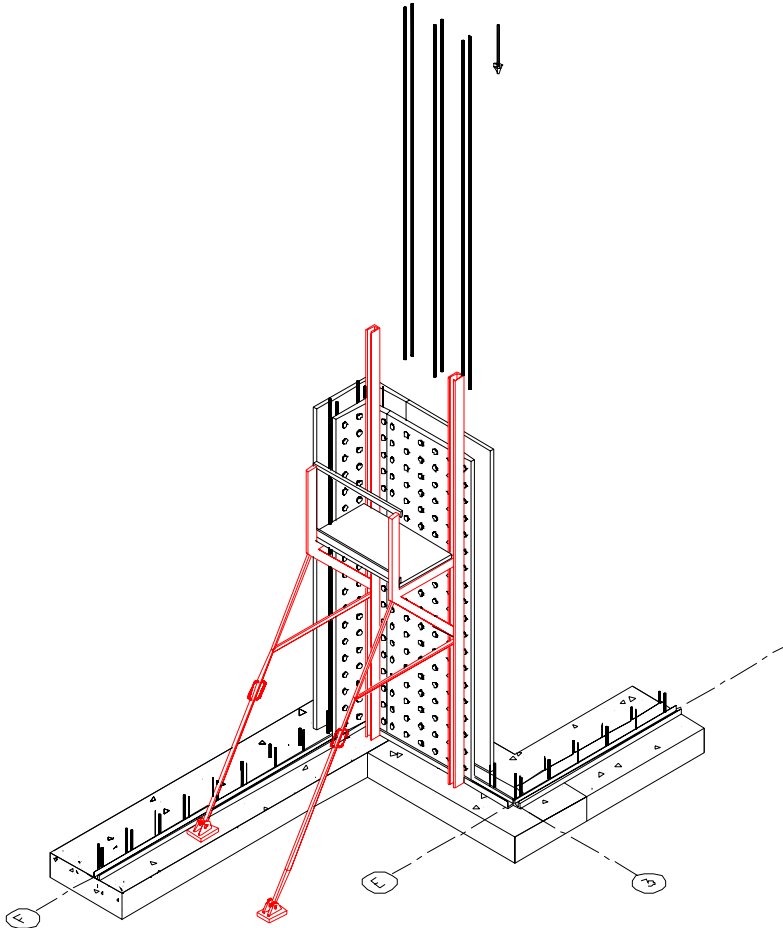
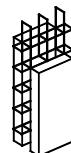


Figure 4.1 Installation diagram of the vertical reinforcement



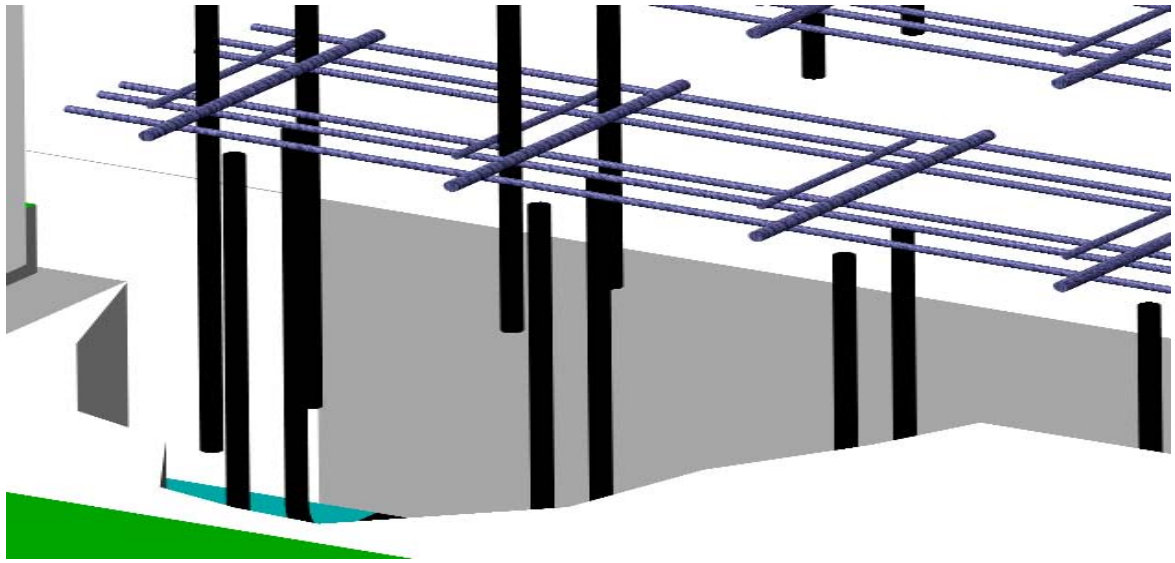


Figure 4.2 Detail of installation of the vertical reinforcement in the panel

After completing the installation of vertical reinforcement, horizontal reinforcement should be installed (if required).

Horizontal reinforcement is to be inserted as Armopanel™ (or separate re-bars between vertical reinforcement) horizontal mesh from an open end of the panel.

The horizontal reinforcement of a given panel should be spliced with the horizontal reinforcement of the previous panels by up to 320-400mm (13"-16") in accordance with the local building code or the specific project.

This reinforcement is installed @ 200 or 400mm along the height of the panels.

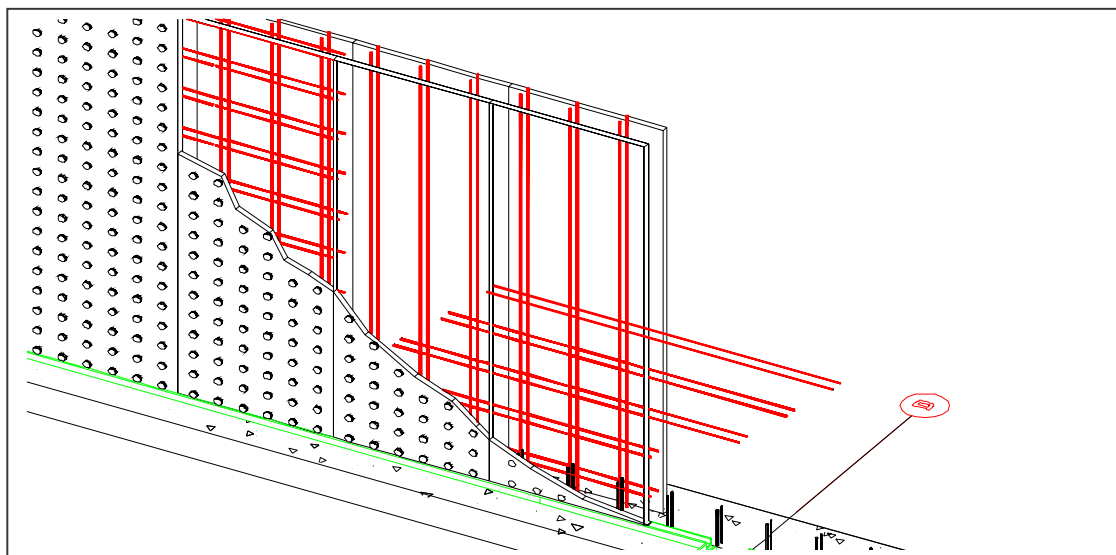


Figure 4.3 Installation diagram of the horizontal reinforcement

