

3. Third phase: Panel installation

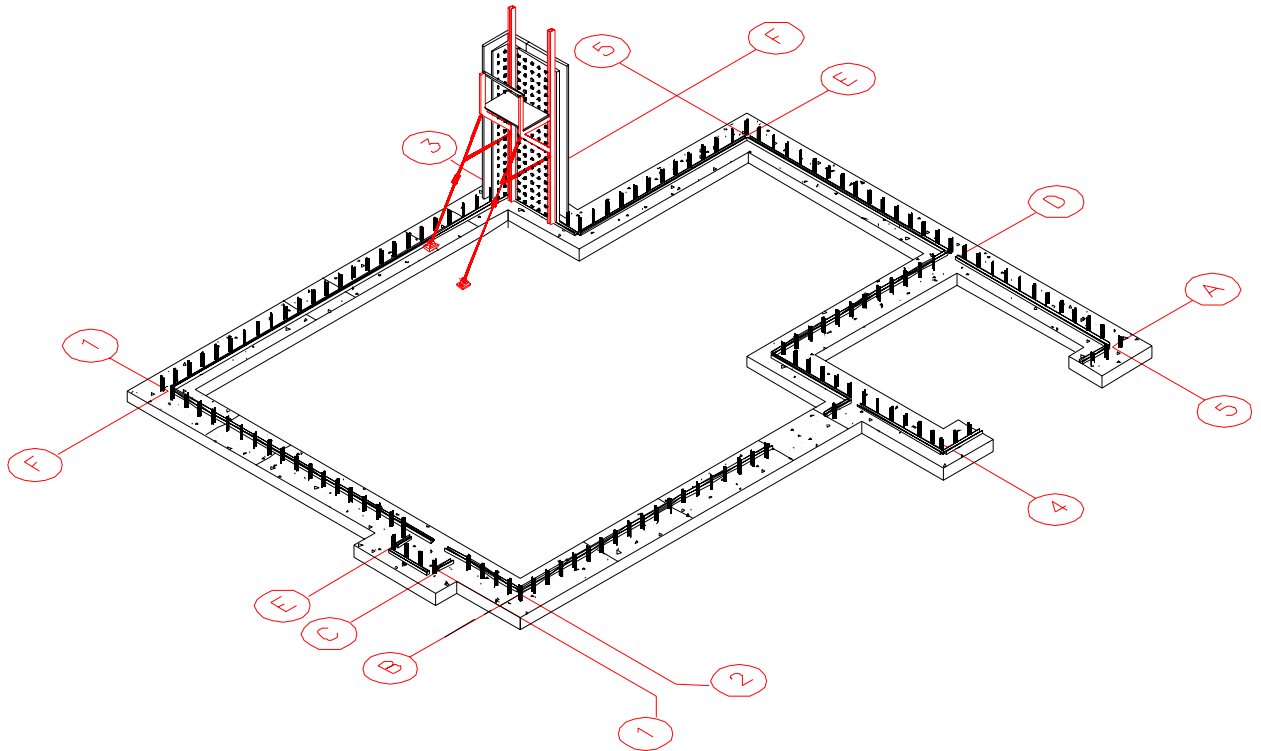
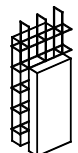


Figure 3.1 Layout of the footings with installation of the first corner and plain panel

Installation of the panels should follow the installation of the corner panel. After the corner panel has been installed, the plain panel adjacent to the corner panel should be erected.

The assembly of the panels for the corner of the building should be as follows:

- Place the corner panel in the particular corner, which is indicated as the first one to be installed according to the layout for panel installation.
- Place the plain panel adjacent to the corner panel
- Join the corner panel and the plain panel by means of connecting meshes
- Fix the wall alignment system to the corner panel. Place the vertical props exactly by the edges of the U-Guides and opposite the plastic caps of the panel. Screw the vertical alignment system to the plastic caps of the panels.



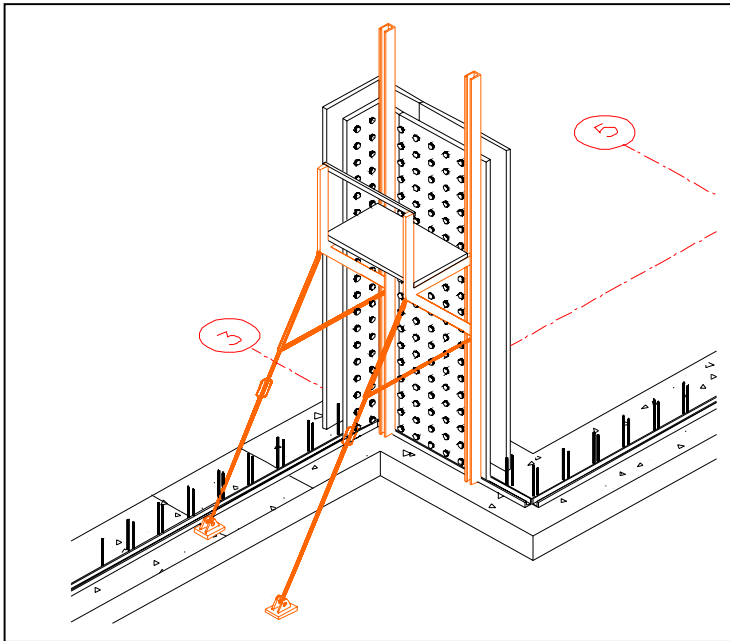


Figure 3.2 Layout for the installation of the first corner

Useful tip:

Wind the screws in tightly, but not excessively tight.

The panels must not be set too rigidly in order to allow easy "settlement" after pouring of the concrete.

After attaching the alignment system, anchor the bottom of the diagonal bracing.

Fix the corner and plain panels with Connecting Meshes

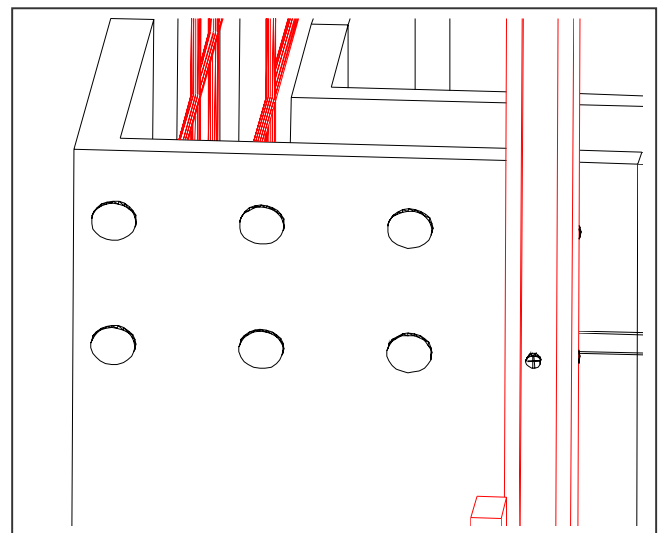
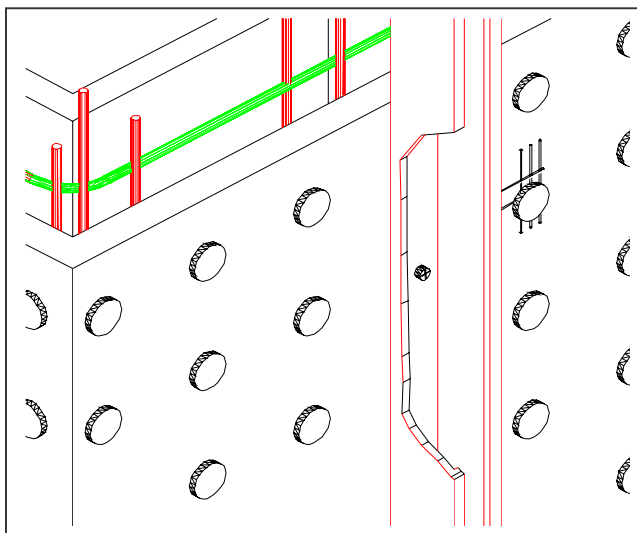
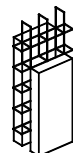


Figure 3.3 Details of installation of Alignment System



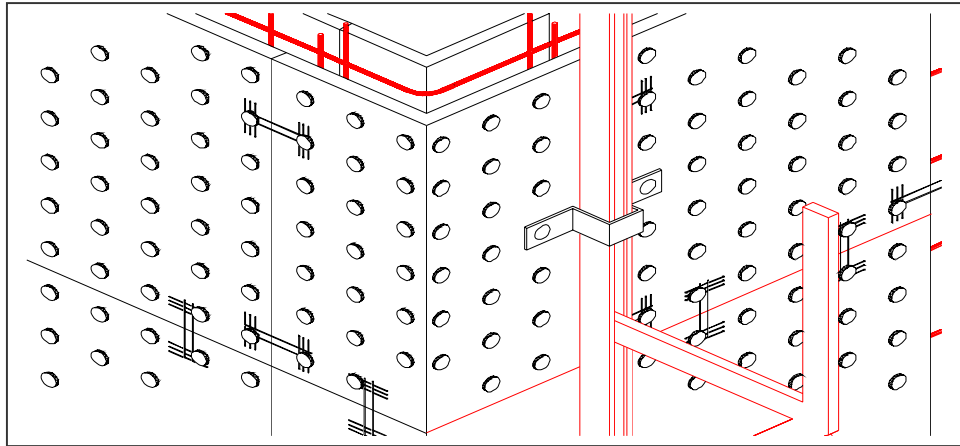


Figure 3.4 Detail of installation of Alignment System

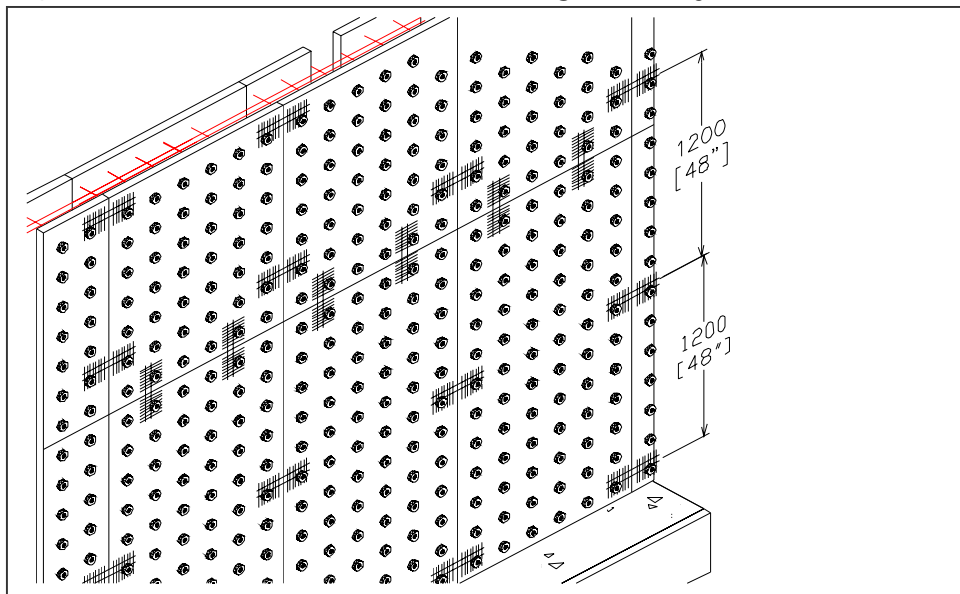


Figure 3.5 Detail of installation of the Armopanel™ Connecting Mesh

Connecting meshes are installed in the following sequence:

1. Slightly unscrew the plastic caps in the outmost rows of adjacent panels
2. Insert the connecting meshes into the gap between the plastic caps and the panel to allow the horizontal rebars to tightly hold the caps' stem
3. Screw the plastic caps tightly

Installation of connecting meshes is repeated in not more than 1.2m (48") vertically.

Useful tip:

Attach the diagonal brace with a turnbuckle to the concrete or footing in order to adjust the plumbing of the panels.

