

## 12. Curved wall

In order to build the curved wall, you will need to perform the following:

- 1) Mark the interior line of the curved wall on the footing surface or on the slab. The wall radius is as per design with accounted discreteness of the panel cutting.

*The wall radius should not be less than 610mm (24").*

The radiuses of the wall and the sizes of the removable pieces of polystyrene are presented in tables according to wall thickness.

- 2) Remove the panel's interior sheet segment (specified in the table) in between the plastic caps and cut metal spacers of the same size.
- 3) Cut the exterior polystyrene sheet opposite to the cut pieces mentioned in paragraph 3 to the depth of 20mm (3/4").
- 4) Place the curved panel into the U-guide.
- 5) Install the vertical reinforcement as per design.
- 6) Install curved horizontal reinforcement into each horizontal row of panels.
- 7) Place the next panel (if it's required to complete the designed radius). Repeat the same procedures as described for the first panel.
- 8) Place the plain panels adjacent to the curved wall as per layout.
- 9) Connect the panels between themselves with the connecting elements.
- 10) Secure the plastic bands to each plastic cap @ 200mm (8") along the interior and exterior sides of the panel.

For walls with *radius 4579mm (15')* or more, the panels do not *require to be curved* and you will need only to cut the ends.

The size of the cut should be in accordance with the Table depending on the radius of the curved wall.

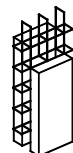
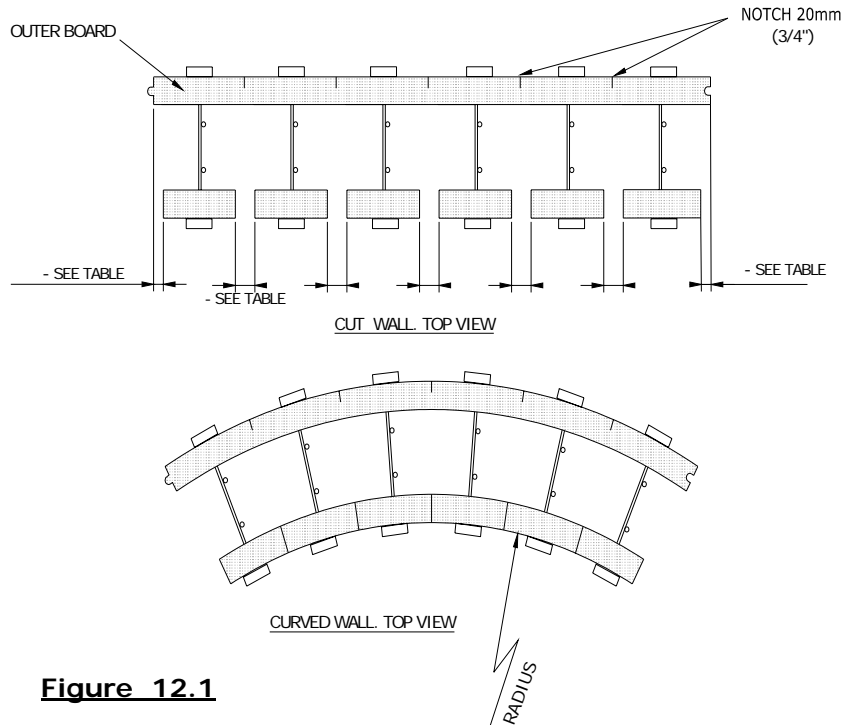


Diagram and Table for panels cut at corresponding radius of the wall curve



**Figure 12.1**

| RADIUS TO INSIDE OF WALL | MIDDLE SECTION REMOVED FROM PANEL, mm | OUTER SECTION REMOVED FROM PANEL, mm | RADIUS TO INSIDE OF WALL | MIDDLE SECTION REMOVED FROM PANEL, mm | OUTER SECTION REMOVED FROM PANEL, mm |
|--------------------------|---------------------------------------|--------------------------------------|--------------------------|---------------------------------------|--------------------------------------|
| 610 (2')                 | 58                                    | 29                                   | 3050 (10')               | 14                                    | 7                                    |
| 760 (2'-6")              | 50                                    | 25                                   | 3660 (12')               | 12                                    | 6                                    |
| 915 (3')                 | 42                                    | 21                                   | 4570 (15')               | 10                                    | 5                                    |
| 1220 (4')                | 34                                    | 17                                   | 6100 (20')               | 8                                     | 4                                    |
| 1830 (6')                | 24                                    | 12                                   | 7600 (25')               | 6                                     | 3                                    |
| 2440 (8')                | 18                                    | 9                                    | 9150 (30')               | 4                                     | 2                                    |

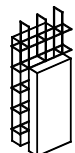
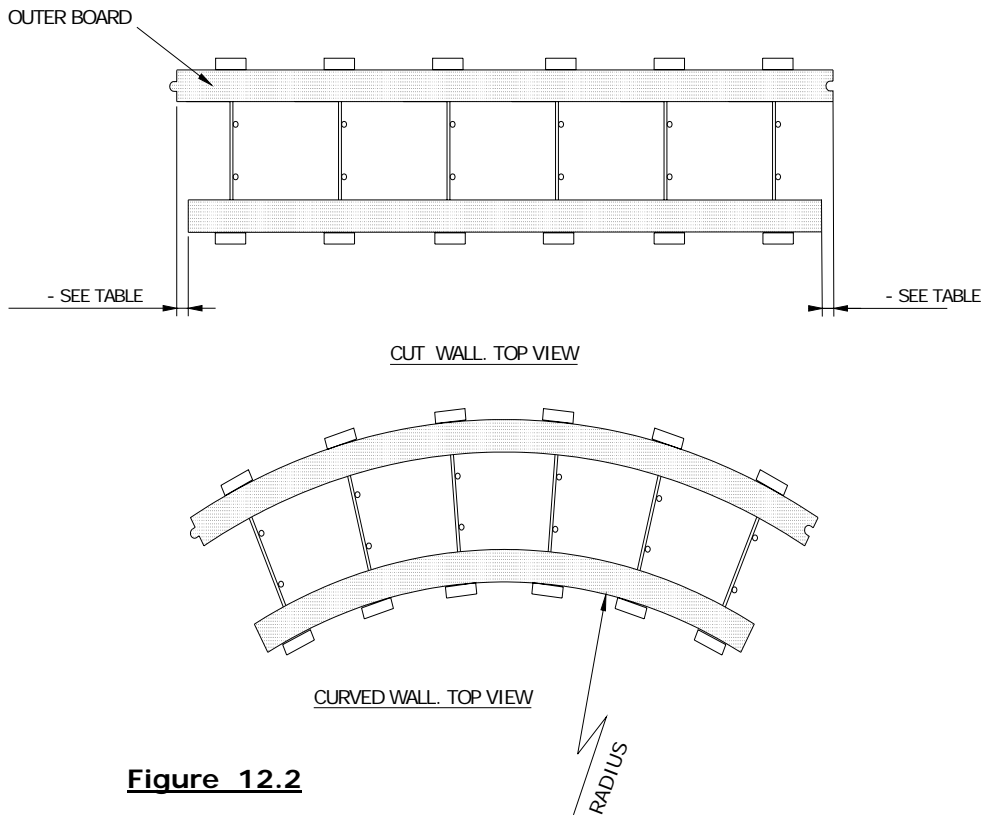


Diagram and Table for the end panels cut at corresponding radius of the wall curve



**Figure 12.2**

| RADIUS TO INSIDE OF WALL | OUTER SECTION REMOVED FROM PANEL, mm | RADIUS TO INSIDE OF WALL | OUTER SECTION REMOVED FROM PANEL, mm |
|--------------------------|--------------------------------------|--------------------------|--------------------------------------|
| 4570 (15')               | 51                                   | 9150 (30')               | 21                                   |
| 6100 (20')               | 36                                   | 12200 (40')              | 18                                   |
| 7600 (25')               | 27                                   | 15240 (50')              | 13                                   |

