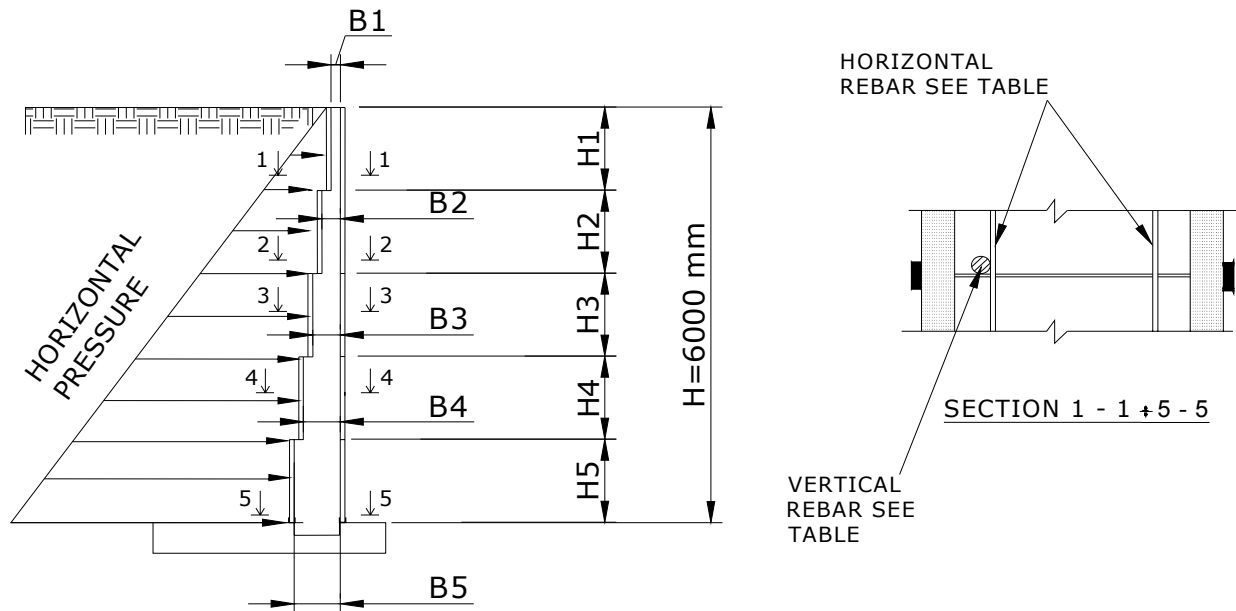


B-9.1. Retaining Wall Reinforcement Table (metric)

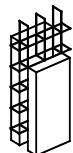
Reinforcement and loads for retaining walls that out lined in the table B-9.1. are given for Information only.

It is responsibility of the structural engineer to provide adequate and accurate design of The retaining wall for specific project in accordance with local building codes.



| SURCHARGE LOAD | SECTION | | CONCRETE WALL THICKNESS [B], mm | ACTIVE SOIL PRESSURE kN/m^2 | VERTICAL REINFORCEMENT STEEL | HORIZONTAL REINFORCEMENT |
|----------------|---------|-----------------|---------------------------------|--------------------------------------|------------------------------|--------------------------|
| | No. | HEIGHT, [H], mm | | | | |
| NO SURCHARGE | 1-1 | H1=1200 | B1=200 | 9.0 | D12 @ 200 mm or 10M @ 400 mm | D12 @ 400 mm, EF |
| | 2-2 | H2=1200 | B2=300 | 18.0 | 10M @ 200 mm or 15M @ 400 mm | 10M @ 400 mm, EF |
| | 3-3 | H3=1200 | B3=400 | 27.0 | 15M @ 200 mm or 25M @ 400 mm | 15M @ 400 mm EF |
| | 4-4 | H4=1200 | B4=500 | 36.0 | 25 @ 200 mm or 30M @ 400 mm | 15M @ 400 mm EF |
| | 5-5 | H5=1200 | B5=600 | 45.0 | 30M @ 200 mm or 35M @ 400 mm | 15M @ 400 mm EF |

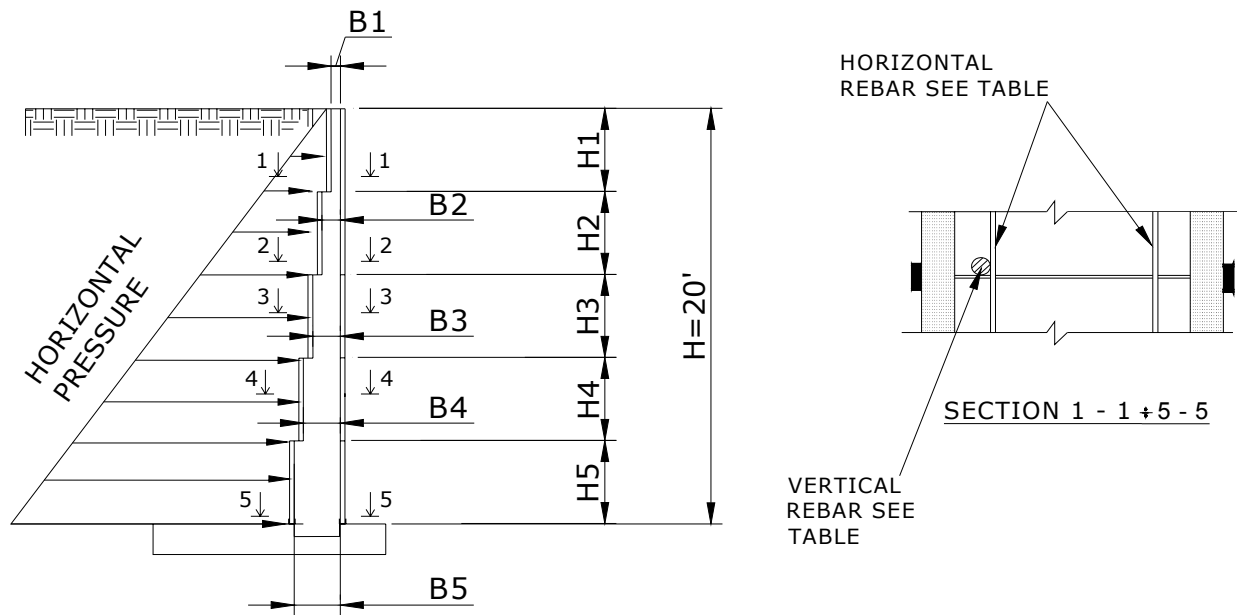
Yield strength of reinforcing bars :400 MPa;
Concrete strength: 30 Mpa



B-9.2. Retaining Wall Reinforcement Table (imperial)

Reinforcement and loads for retaining walls that out lined in the table B-9.2. are given for Information only.

It is responsibility of the structural engineer to provide adequate and accurate design of the retaining wall for specific project in accordance with local building codes.



| SURCHARGE LOAD | SECTION | | CONCRETE WALL THICKNESS [B], inches | ACTIVE SOIL PRESSURE psf | VERTICAL REINFORCEMENT STEEL | HORIZONTAL REINFORCEMENT |
|----------------|---------|-------------------|-------------------------------------|--------------------------|------------------------------|--------------------------|
| | No. | HEIGHT, [H], feet | | | | |
| NO SURCHARGE | 1-1 | H1=4' | B1=8" | 188 | #3 @ 8" or #4 @ 16" | #3 @ 16", EF |
| | 2-2 | H2=4' | B2=12" | 376 | #4 @ 8" or #5 @ 16" | #4 @ 16", EF |
| | 3-3 | H3=4' | B3=16" | 564 | #5 @ 8" or #7 @ 16" | #5 @ 16", EF |
| | 4-4 | H4=4' | B4=20" | 752 | #7 @ 8" or #9 @ 16" | #5 @ 16", EF |
| | 5-5 | H5=4' | B5=24" | 939 | #9 @ 8" or #11 @ 16" | #5 @ 16", EF |

Yield strength of reinforcing bars :60,000 psi;
Concrete strength: 4,300 psi.

