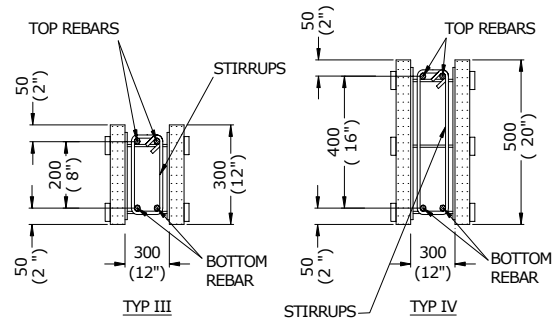


B-8.2. Lintels Reinforcement Required for Concrete Walls

Table B-8.2.1. Lintel Reinforcement Required

Concrete Strength = 20MPa (3,000 psi)
 Steel Strength = 400MPa (60,000 psi)

Stirrups: D8@150 (# 3 @ 6") [for TYPE III-IV]



ACCEPTABLE LINTELS CLEAR SPAN AND FACTORED UNIFORMLY DISTRIBUTED LOAD *										
CONCRETE WALL THICKNESS 300 mm (12 in.)										
FACTORED UDL, kN / m. (lbs / ft.)	TYPE III LINTEL HEIGHT 300 mm (12")					TYPE IV LINTEL HEIGHT 500 mm (20")				
	LINTEL SPAN, mm (ft)									
	1200 (4')	1500 (5')	1800 (6')	2100 (7')	2400 (8')	2700 (9')	3000 (10')	3300 (11')	3600 (12')	3800 (12.5')
15 (1000)	2-15M (2 # 5) TOP + BOTTOM		2-20M (2 # 6) TOP + BOTTOM		2-20M (2 # 6) TOP + BOTTOM		2-25M (2 # 8) TOP + BOTTOM			
22 (1500)										
29 (2000)										
37 (2500)										
44 (3000)										
51 (3500)										
58 (4000)										
66 (4500)										
73 (5000)										
80 (5500)										
87 (6000)										
* NOTE: THE LINTELS SELF-WEIGHT IS INCLUDED IN SHOWN DISTRIBUTED LOADS										

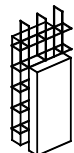
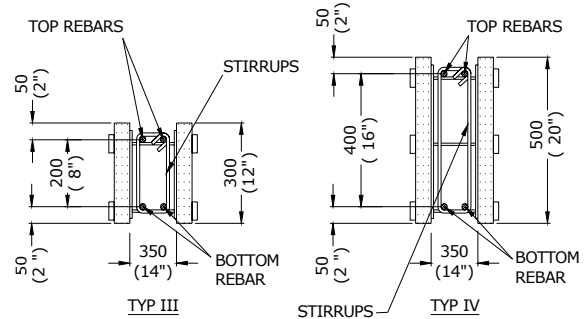


Table B-8.2.2. Lintel Reinforcement Required

Concrete Strength = 20MPa (3,000 psi)
 Steel Strength = 400MPa (60,000 psi)

Stirrups: D8@150 (# 3 @ 6") [for TYPE III-IV]



ACCEPTABLE LINTELS CLEAR SPAN AND FACTORED UNIFORMLY DISTRIBUTED LOAD *										
CONCRETE WALL THICKNESS 350 mm (14 in.)										
FACTORED UDL, kN / m. (lbs / ft.)	TYPE III LINTEL HEIGHT 300 mm (12")					TYPE IV LINTEL HEIGHT 500 mm (20")				
	LINTEL SPAN, mm (ft)									
	1200 (4')	1500 (5')	1800 (6')	2100 (7')	2400 (8')	2700 (9')	3000 (10')	3300 (11')	3600 (12')	3800 (12.5')
15 (1000)	2-15M (2 # 5) TOP + BOTTOM		2-20M (2 # 6) TOP + BOTTOM		2-20M (2 # 6) TOP + BOTTOM		2-25M (2 # 8) TOP + BOTTOM			
22 (1500)										
29 (2000)										
37 (2500)										
44 (3000)										
51 (3500)										
58 (4000)										
66 (4500)										
73 (5000)										
80 (5500)										
87 (6000)										

* NOTE: THE LINTELS SELF-WEIGHT IS INCLUDED IN SHOWN DISTRIBUTED LOADS

