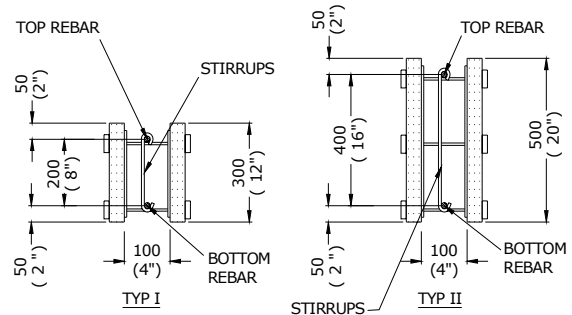


B-8.1. Lintel Reinforcement Tables

Table B-8.1.1. Lintel Reinforcement Required

Concrete Strength = 20MPa (3,000 psi)
 Steel Strength = 400MPa (60,000 psi)

The indicated size and number of rebars in each cell of the tables is placed at the top and bottom of the lintel.



| LINTELS CLEAR SPAN AND APPLIED LOADS | | | | | | | | | | |
|--|------------------------------------|--------------|--------------|--------------|---------------|-------------------------------------|---------------|---------------|---------------|---------------|
| CONCRETE WALL THICKNESS 100mm (4") | | | | | | | | | | |
| UNIFORM FACTORED LOAD: kN / m (Lbs / ft) | (TYP I) LINTEL HEIGHT 300mm (12") | | | | | (TYP II) LINTEL HEIGHT 500mm (20") | | | | |
| | STIRRUPS 10M@125 (#4 @ 5") | | | | | STIRRUPS 10M@ 200 (#4 @ 8") | | | | |
| | LINTEL SPAN, mm (ft) | | | | | | | | | |
| | 1200 (4') | 1500 (5') | 1800 (6') | 2400 (8') | 3000 (10') | 3600 (12') | 4200 (14') | 4800 (16') | 5400 (18') | 6000 (20') |
| 10 (700) | 10M # 4 | 10M # 4 | 10M # 4 | 10M # 4 | 10M # 4 | 15M # 5 | 15M # 5 | 15M # 5 | 20M # 6 | 2x15M 2# 5 |
| 15 (1000) | 10M # 4 | 10M # 4 | 10M # 4 | 15M # 5 | 15M # 5 | 15M # 5 | 20M # 6 | 20M # 6 | 2x15M 2# 5 | 2x20M 2# 6 |
| 20 (1400) | 10M # 4 | 10M # 4 | 10M # 4 | 15M # 5 | 15M # 5 | 20M # 6 | 2x15M 2# 5 | 2x20M 2# 6 | 2x20M 2# 6 | |
| 25 (7000) | 10M # 4 | 10M # 4 | 15M # 5 | 20M # 6 | 15M # 5 | 20M # 6 | 2x15M 2# 5 | 2x20M 2# 6 | | |
| 30 (2000) | 10M # 4 | 15M # 5 | 15M # 5 | 20M # 6 | 20M # 6 | 2x15M 2# 5 | | | | |
| 35 (2400) | 10M # 4 | 15M # 5 | 15M # 5 | | 20M # 6 | 2x20M 2# 6 | | | | |
| 40 (2700) | 10M # 4 | 15M # 5 | 20M # 6 | | 2x15M 2# 5 | 2x20M 2# 6 | | | | |
| 45 (3100) | 10M # 4 | 15M # 5 | 20M # 6 | | 2x15M 2# 5 | 2x20M 2# 6 | | | | |
| 50 (3500) | 15M # 5 | 15M # 5 | 20M # 6 | | 2x20M 2# 6 | | | | | |

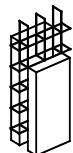
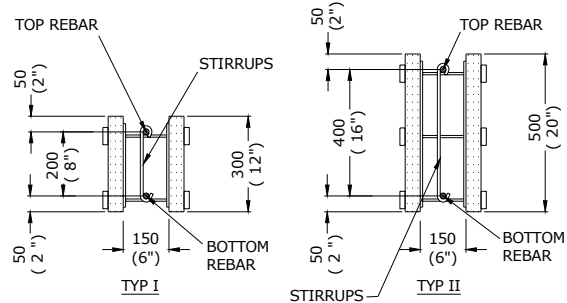


Table B-8.1.2. Lintel Reinforcement Required

Concrete Strength = 20MPa (3,000 psi)
 Steel Strength = 400MPa (60,000 psi)

The indicated size and number of rebars in each cell of the tables is placed at the top and bottom of the lintel.



| LINTELS CLEAR SPAN AND APPLIED LOADS | | | | | | | | | | |
|--|-------------------------------------|--------------|--------------|--------------|---------------|--------------------------------------|---------------|---------------|---------------|---------------|
| CONCRETE WALL THICKNESS 150mm (6") | | | | | | | | | | |
| UNIFORM FACTORED LOAD: kN / m (Lbs / ft) | (TYP I) LINTEL HEIGHT 300mm (12") | | | | | (TYP II) LINTEL HEIGHT 500mm (20") | | | | |
| | STIRRUPS 10M@125 (#4 @ 5") | | | | | STIRRUPS 10M@ 200 (#4 @ 8") | | | | |
| | LINTEL SPAN, mm (ft) | | | | | | | | | |
| | 1200 (4') | 1500 (5') | 1800 (6') | 2400 (8') | 3000 (10') | 3600 (12') | 4200 (14') | 4800 (16') | 5400 (18') | 6000 (20') |
| 10 (700) | 10M # 4 | 10M # 4 | 10M # 4 | 10M # 4 | 10M # 4 | 15M # 5 | 15M # 5 | 15M # 5 | 20M # 6 | 20M # 6 |
| 15 (1000) | 10M # 4 | 10M # 4 | 10M # 4 | 15M # 5 | 15M # 5 | 15M # 5 | 20M # 6 | 20M # 6 | 2x15M 2# 5 | 2x20M 2# 6 |
| 20 (1400) | 10M # 4 | 10M # 4 | 10M # 4 | 15M # 5 | 15M # 5 | 20M # 6 | 20M # 6 | 2x15M 2# 5 | 2x20M 2# 6 | |
| 25 (7000) | 10M # 4 | 10M # 4 | 15M # 5 | 20M # 6 | 15M # 5 | 20M # 6 | 2x15M 2# 5 | 2x20M 2# 6 | | |
| 30 (2000) | 10M # 4 | 15M # 5 | 15M # 5 | 20M # 6 | 20M # 6 | 2x15M 2# 5 | 2x20M 2# 6 | | | |
| 35 (2400) | 10M # 4 | 15M # 5 | 15M # 5 | 2x15M 2# 5 | 20M # 6 | 2x15M 2# 5 | 2x20M 2# 6 | | | |
| 40 (2700) | 10M # 4 | 15M # 5 | 20M # 6 | 2x20M 2# 6 | 20M # 6 | 2x20M 2# 6 | | | | |
| 45 (3100) | 10M # 4 | 15M # 5 | 20M # 6 | 2x20M 2# 6 | 2x15M 2# 5 | 2x20M 2# 6 | | | | |
| 50 (3500) | 15M # 5 | 15M # 5 | 20M # 6 | 2x20M 2# 6 | 2x15M 2# 5 | 2x20M 2# 6 | | | | |

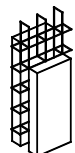
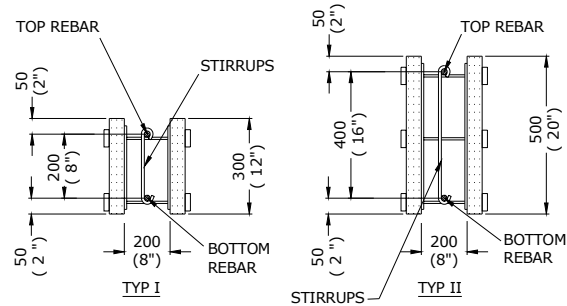


Table B-8.1.3. Lintel Reinforcement Required

Concrete Strength = 20MPa (3,000 psi)
 Steel Strength = 400MPa (60,000 psi)

The indicated size and number of rebars in each cell of the tables is placed at the top and bottom of the lintel.



| LINTELS CLEAR SPAN AND APPLIED LOADS | | | | | | | | | | |
|--|------------------------------------|--------------|--------------|--------------|---------------|-------------------------------------|---------------|---------------|---------------|---------------|
| CONCRETE WALL THICKNESS 200mm (8") | | | | | | | | | | |
| UNIFORM FACTORED LOAD: kN / m (Lbs / ft) | (TYP I) LINTEL HEIGHT 300mm (12") | | | | | (TYP II) LINTEL HEIGHT 500mm (20") | | | | |
| | STIRRUPS 10M@125mm (#4@ 5") | | | | | STIRRUPS 10M@ 200mm (#4@ 8") | | | | |
| | LINTEL SPAN, mm (ft) | | | | | | | | | |
| | 1200 (4') | 1500 (5') | 1800 (6') | 2400 (8') | 3000 (10') | 3600 (12') | 4200 (14') | 4800 (16') | 5400 (18') | 6000 (20') |
| 10 (700) | 10M # 4 | 10M # 4 | 10M # 4 | 10M # 4 | 15M # 5 | 15M # 5 | 15M # 5 | 15M # 5 | 20M # 6 | 20M # 6 |
| 15 (1000) | 10M # 4 | 10M # 4 | 10M # 4 | 15M # 5 | 20M # 6 | 15M # 5 | 20M # 6 | 20M # 6 | 2x15M 2# 5 | 2x20M 2# 6 |
| 20 (1400) | 10M # 4 | 10M # 4 | 10M # 4 | 15M # 5 | 20M # 6 | 20M # 6 | 20M # 6 | 2x15M 2# 5 | 2x20M 2# 6 | 2x20M 2# 6 |
| 25 (7000) | 10M # 4 | 10M # 4 | 15M # 5 | 20M # 6 | 2x15M 2# 5 | 20M # 6 | 2x15M 2# 5 | 2x20M 2# 6 | 2x20M 2# 6 | 3x20M 3# 6 |
| 30 (2000) | 10M # 4 | 15M # 5 | 15M # 5 | 20M # 6 | 2x20M 2# 6 | 2x15M 2# 5 | 2x20M 2# 6 | 2x20M 2# 6 | 3x20M 3# 6 | |
| 35 (2400) | 10M # 4 | 15M # 5 | 15M # 5 | 2x15M 2# 5 | 2x20M 2# 6 | 2x15M 2# 5 | 2x20M 2# 6 | 3x20M 3# 6 | | |
| 40 (2700) | 10M # 4 | 15M # 5 | 15M # 5 | 2x15M 2# 5 | 2x20M 2# 6 | 2x20M 2# 6 | 2x20M 2# 6 | 3x20M 3# 6 | | |
| 45 (3100) | 10M # 4 | 15M # 5 | 20M # 6 | 2x20M 2# 6 | | 2x20M 2# 6 | | | | |
| 50 (3500) | 15M # 5 | 15M # 5 | 20M # 6 | 2x20M 2# 6 | | 3x20M 3# 6 | | | | |

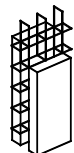
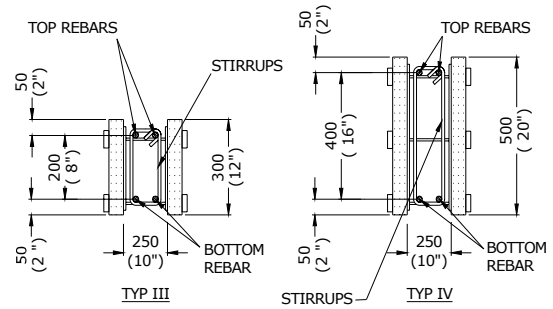


Table B-8.1.4. Lintel Reinforcement Required

Concrete Strength = 20MPa (3,000 psi)
 Steel Strength = 400MPa (60,000 psi)

The indicated size and number of rebars in each cell of the tables is placed at the top and bottom of the lintel.



| LINTELS CLEAR SPAN AND APPLIED LOADS | | | | | | | | | | | |
|--|------------------------------|---------|---------|----------------------------|------------|--------------------------------------|------------|------------|------------|------------|--|
| CONCRETE WALL THICKNESS 250mm (10") | | | | | | | | | | | |
| UNIFORM FACTORED LOAD: kN / m (Lbs / ft) | (TYPE I) LINTEL | | | (TYPE III) LINTEL | | (TYPE IV) LINTEL HEIGHT 500mm (20") | | | | | |
| | HEIGHT 300mm (12") | | | | | | | | | | |
| | STIRRUPS 10M@ 125mm (#4@ 5") | | | STIRRUPS D8@125mm (#3@ 5") | | STIRRUPS D8@ 200mm (#3@ 8") | | | | | |
| | LINTEL SPAN, mm (ft) | | | | | | | | | | |
| | 1200 | 1500 | 1800 | 2400 | 3000 | 3600 | 4200 | 4800 | 5400 | 6000 | |
| (4') | (5') | (6') | (8') | (10') | (12') | (14') | (16') | (18') | (20') | | |
| 10 (700) | 10M # 4 | 10M # 4 | 10M # 4 | 2x10M 2# 4 | 2x10M 2# 4 | 2x10M 2# 4 | 2x10M 2# 4 | 2x10M 2# 4 | 2x15M 2# 5 | 2x15M 2# 5 | |
| 15 (1000) | 10M # 4 | 10M # 4 | 10M # 4 | 2x10M 2# 4 | 2x15M 2# 5 | 2x10M 2# 4 | 2x15M 2# 5 | 2x15M 2# 5 | 2x15M 2# 5 | 2x20M 2# 6 | |
| 20 (1400) | 10M # 4 | 10M # 4 | 10M # 4 | 2x10M 2# 4 | 2x15M 2# 5 | 2x15M 2# 5 | 2x15M 2# 5 | 2x15M 2# 5 | 2x20M 2# 6 | 2x20M 2# 6 | |
| 25 (7000) | 10M # 4 | 10M # 4 | 15M # 5 | 2x15M 2# 5 | 2x15M 2# 5 | 2x15M 2# 5 | 2x15M 2# 5 | 2x20M 2# 6 | 2x20M 2# 6 | 3x20M 3# 6 | |
| 30 (2000) | 10M # 4 | 10M # 4 | 15M # 5 | 2x15M 2# 5 | 2x20M 2# 6 | 2x15M 2# 5 | 2x20M 2# 6 | 2x20M 2# 6 | 3x20M 2# 6 | 2x25M 2# 8 | |
| 35 (2400) | 10M # 4 | 15M # 5 | 15M # 5 | 2x15M 2# 5 | 2x20M 2# 6 | 2x15M 2# 5 | 2x20M 2# 6 | 2x20M 2# 6 | 3x20M 3# 6 | 3x25M 3# 8 | |
| 40 (2700) | 10M # 4 | 15M # 5 | 15M # 5 | 2x15M 2# 5 | 2x20M 3# 6 | 2x20M 2# 6 | 2x20M 2# 6 | 3x20M 2# 6 | 2x25M 2# 8 | 3x25M 3# 8 | |
| 45 (3100) | 10M # 4 | 15M # 5 | 20M # 6 | 2x20M 2# 6 | 3x20M 3# 6 | 2x20M 2# 6 | 3x20M 3# 6 | 2x25M 2# 8 | 3x25M 3# 8 | | |
| 50 (3500) | 15M # 5 | 15M # 5 | 20M # 6 | 2x20M 2# 6 | 3x20M 3# 6 | 2x20M 2# 6 | 3x20M 3# 6 | 2x25M 2# 8 | 3x25M 3# 8 | | |

